

Switch Solenoid

Model NO.: Z11C-37YCA

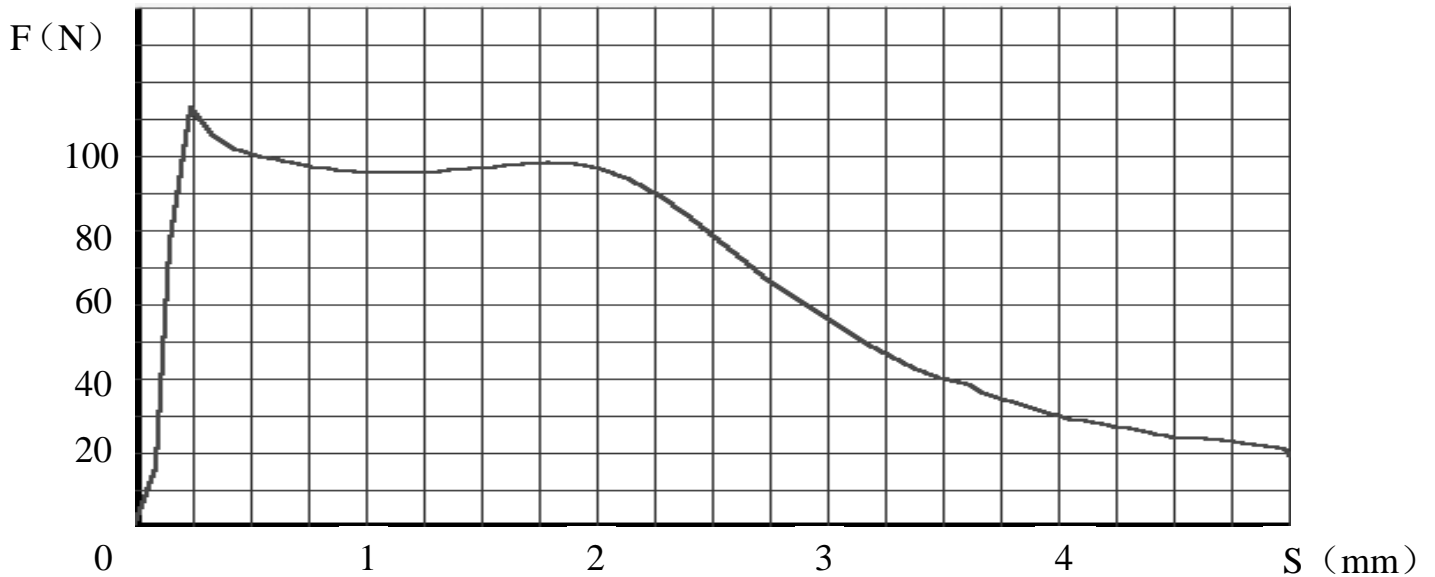
SM-CCBZ-001A

Technical Parameters

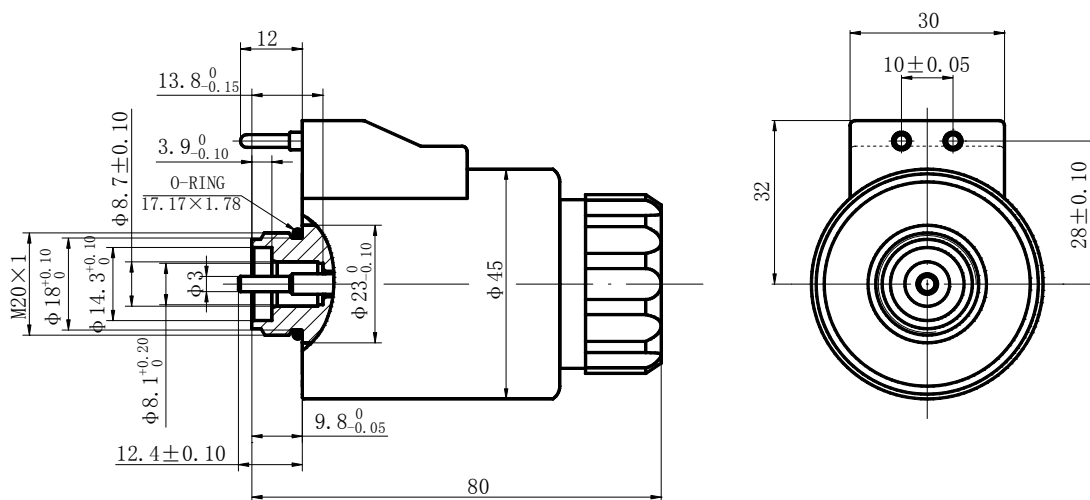
Power type	DC	Rated Voltage (V)	24
Voltage Range (%)	±10	Power Consumption (W)	32
Stable Current (A)	0.95	Cold Status Current(A)	1.32
Temperature Rise (K)	91	Stable force (N)	≥37
Full stroke (mm)	6.5	Rated stroke (mm)	2.8
Isolation Grade	H/180°C	Duty Time (%)	100
Oil Pressure Duration (MPa)	21	IP Grade	IP65
Max Switch Frequency (t/h)	15000	Life Cycle (t)	10X10 ⁶

Stable S—F CURVE

testing current: 0.95A



Outside shape and installation dimensions



2010.10.15